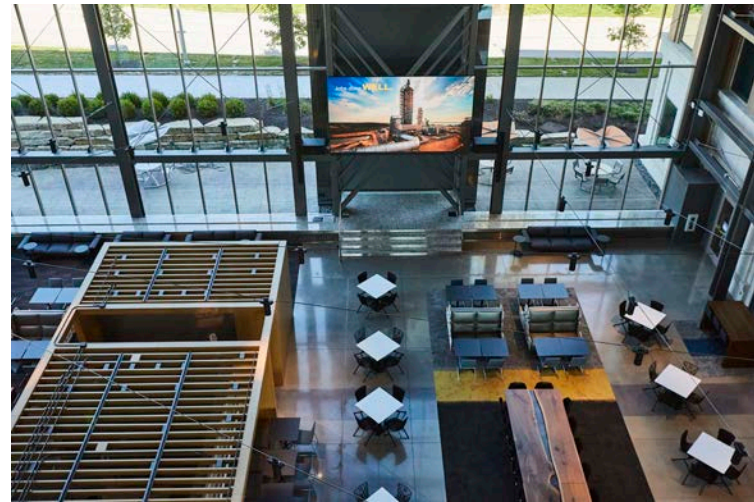


SITUATION

Kiewit Corporation engaged SKC Communications at the end of 2018 to assist with the design and build of two buildings they were gutting as well as a new third building being built from the ground up.



SOLUTION

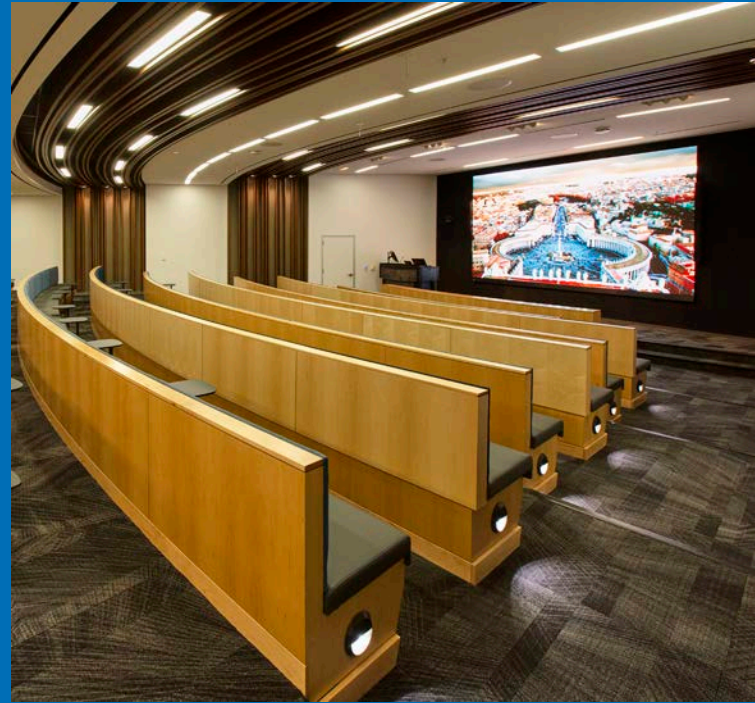
SKC Communications provided all the AV services of the new building. The building consists of specialty rooms such as Pitch Room, Executive Boardroom, Auditorium, Atrium, and Training Rooms. There are also cookie-cutter integrated conference rooms of multiple sizes (Large, Medium, Small, and Huddle) throughout the buildings. The Auditorium and Atrium each feature a 220" PrimeView LED wall. The Pitch Room and Executive Boardroom each feature a 138" PrimeView LED wall.



RESULTS

SKC designed and implemented over 200 conference rooms throughout the buildings. The integrated rooms are powered by Crestron control and video switching. Audio processing is powered by Biamp technology. Samsung displays are used in all rooms, many rooms of which have dual displays. Four different rooms are highlighted with direct-view LED technology from PrimeView. Every room in the building consists of Mersive wireless presentation technology, which has been adopted by Kiewit across the entire organization.

This design and installation set the tone for Kiewit room standards and functionality requirements across the enterprise.



TECHNOLOGIES USED



Crestron
Biamp
Samsung
PrimeView
Mersive
Shure
Legrand
Poly